

MV ZAKHER ALPHA

60.5 M ANCHOR HANDLING TUG SUPPLY VESSEL DP1, FIFI 1

GENERAL

Year of Build / Place	: 2012 / China
Official No.	: 11196
IMO No.	: 9640865
Cal Sign	: J8B4723
Flag	: St. Vincent & the Grenadines
Port of Registry	: Kingstown
Classification	: BV +Hull +Mach, Tug, Supply Vessel, Fire-Fighting Ship 1, Special Service, Anchor Handling Vessel-Water Spraying, Unrestricted Navigation
GRT/NRT	: 1575 / 472

DIMENSIONS

Length O.A.	: 60.50 m
Length Waterline	: 58.17 m
Breadth Moulded	: 14.60 m
Depth Moulded	: 5.50 m
Draft (Max)	: 4.762 m @ 2990T displacement

MACHINERY

Main Engines	: 2 x 1920 kW (5150 bhp) @ 1600 rpm Caterpillar 3516B
Main Generators	: 2 x Caterpillar, each 450 kWe, 415V/2ph/50Hz
Emergency Generator	: 1 x Caterpillar, 65kWe, 415/3ph/50Hz
Shaft Alternator	: 2 x Cummins-Stanford or Leroy Somer each 900kWe, 415/3ph/50Hz
Bow Thruster	: 2 x 515kW electronic-driven Kawasaki tunnel type (CPP); Thrust 8 T
Steering Gear	: 2 x high performance streamline type
Propulsion	: 2 x CPP type with Kort Nozzle; Berg

CARGO CAPACITIES & DISCHARGE RATES

Deadweight	: 1250 mt @ 4.5m draft
Deck Cargo	: 600 mt
Clear Deck Area	: 370 m @ 7.5 mt/m ²
Fuel Oil	: 520 m ³ , 100 m ³ /h @ 90m head
Fresh Water	: 260 m ³ , 150 m ³ /h @ 90m head
Ballast / Drill Water	: 390 m ³ , 150 m ³ /h @ 90m head
Liquid Mud/Brine	: 130 m ³ , 2 x 75m ³ /hr @ 90m head / 1 x 75 m ³ /hr @ 90m/hr
Base Oil	: 130 m ³ , 1 x 100m ³ /h @90m head
Cement Tank	: 187 m ³ (4 x 1650 ft ³)
Freezer / Chiller	: 10 m ³ / 10 m ³
Foam / Detergent	: 13 m ³ / 13 m ³
Bulk Cement Air Compressor	: 2 x 13 m ³ /min @ 80 psi (5.6 bar) Airman SWS75S

FIRE FIGHTING & SAFETY SYSTEM

EXTERNAL	
FiFi System	: Class 1 with water curtain all around
Fire Pump	: 2 x 1570 m ³ /h @ 130m head driven by front PTO of M/E
Monitors - foam	: 1 x 300 @ 75m throw
- water	: 2 x 1200 m ³ /h @ 120m throw
Oil Dispersant System	: 1 set c/w 2 spray booms 6 m, Wilhemsen
INTERNAL	
Emergency Fire Pump	: 1 x 35m ³ /h at 50m head; Itur
BA Recharging Comp	: 1 x 74 ltrs / min @ 200 bar Coltri MCH16/E-TS
Co2 System	: Fixed in Engine Room

OTHERS

Sewage Treatment Plant	: 1 X 65 men / day
Oily Water Separator	: 1 x 1 m ³ /hr @ 15 PPM
Water Maker	: 1 x 10 m ³ /day reverse osmosis
Liferafts	: 6 x 25 men SOLAS approved type
Rescue Boat	: 1 x 6 men c/w outboard engine 15HP Petrol driven

ACCOMMODATION

2 x 1 - man cabins	: 2 men
4 x 2 - man cabins	: 8 men
8 x 4 - man cabins	: 32 men
Total	: 42 men
Hospital	: 1
All cabins fully air-conditioned and c/w attached washrooms	

PERFORMANCE

Maximum Speed	: 13.5 knots
Economical Speed	: 10 knots
Type of Fuel	: MGO
Fuel Consumption	: 18.1 mt/24hr at max speed 6.5 mt/24hr at economical speed
Bollard Pull	: 65 ton

DECK EQUIPMENT

Anchor Windlass	: 1 x electro-hydraulic HAW, Mentrade 40 mm (ø) chains capacity rated pull 10 MT @ 9m/min
Bow Anchors	: 2 x 1305 kg HHP Anchors
Anchor Chains	: 440 m(L) x 36 mm (dia) Grade U2 (each side)
Capstan	: 2 x 5 mt @ 15m/min electro hydraulic HVC;
Tugger Winch	: 2 x 10 mt @ 15m/min electro hydraulic HUW; Mentrade, Drum Capacity: 220 m (L) x 22 mm (dia)
Towing / AH Winch	: 1 x electro-hydraulic double drum AHTW; Mentrade
Upper Drum Cap (towing)	: 1190m (L) x 56 mm (ø)
Lower Drum Cap (AH)	: 1000m (L) x 56 mm (ø)
Line Pull / both	: 150 mt @ 6.0 m/min at 1st layer 102 mt @ 8.8 m/min at mid layer 78 mt @ 11.5 m/min at top layer
Brake Holding	: 200 mt static @ 1st layer,
Storage Reel	: 1 x 5 mt @ 30 m/min electro hydraulic HSR; Mentrade suit for 1190 m (L) x 56 mm (dia)
Stern Roller	: 5.0 m (L) x 1.50m (dia); SWL 250 mt
Shark Jaws	: 1 x electro-hydraulic Karmfork - SWL 300MT
Tow Pins	: 2 x electro-hydraulic retractable type SWL 200 mt
Deck Crane	: Electro-hydraulic; 5.9mt@4m / 2.2mt@12m

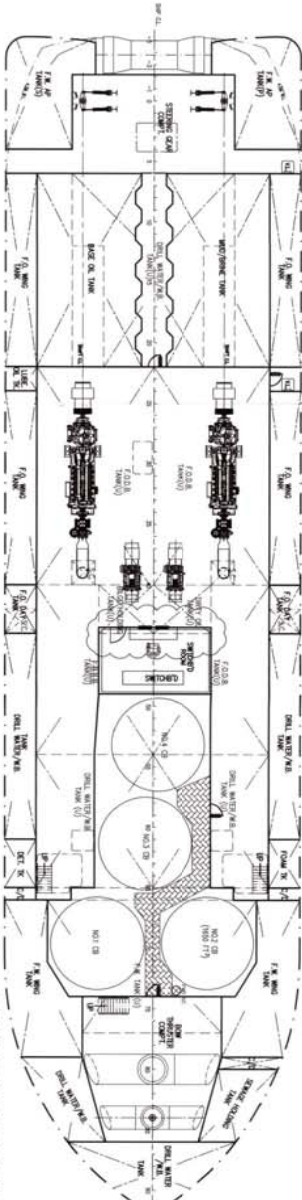
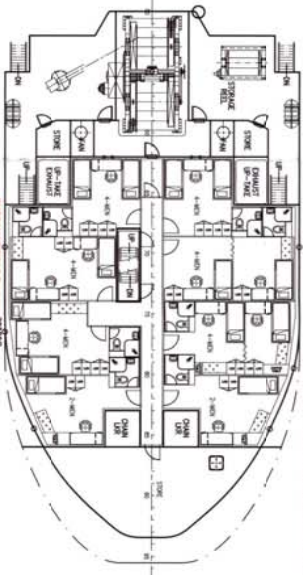
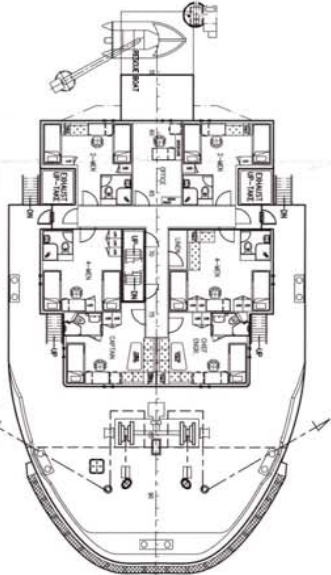
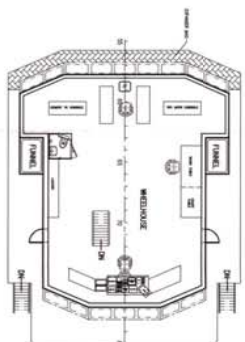
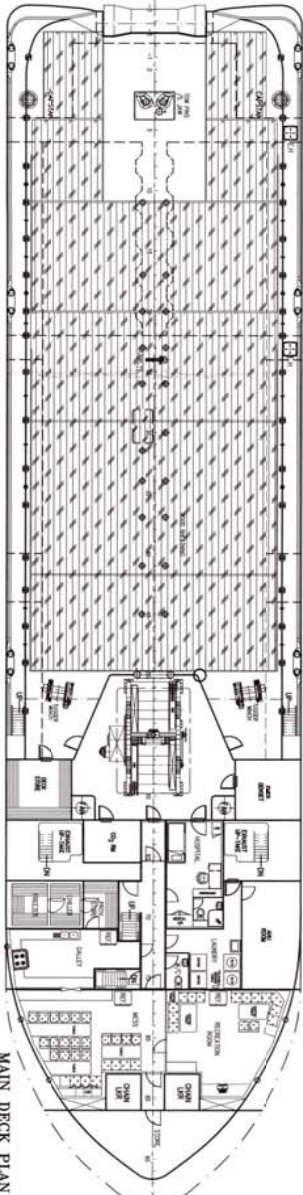
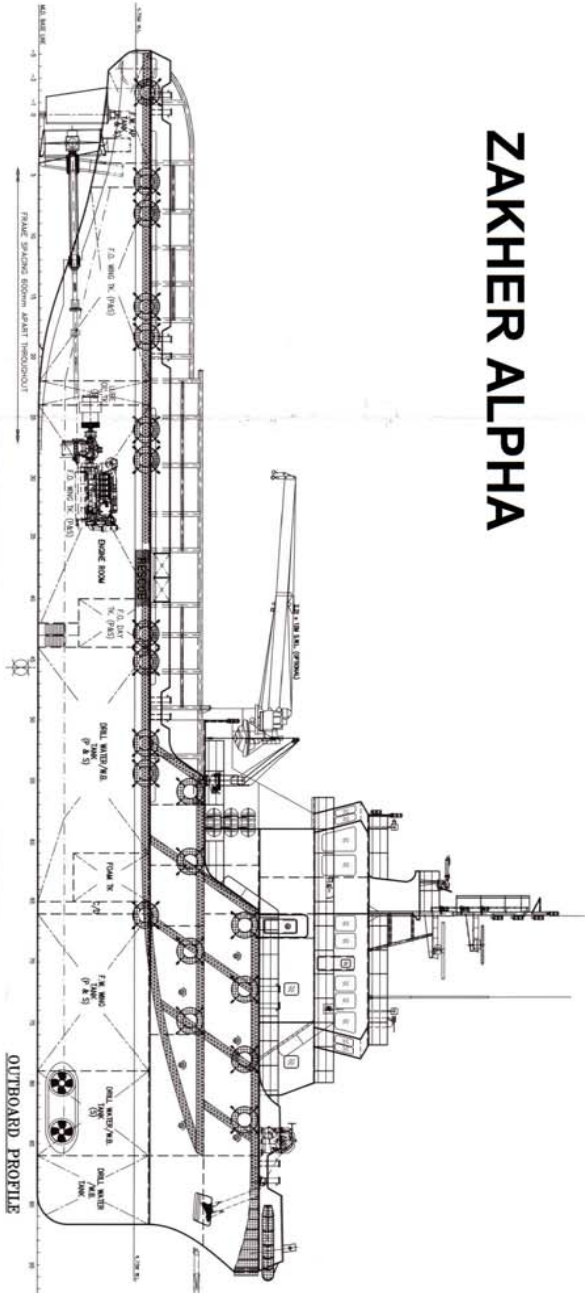
NAVIGATION & COMMUNICATIONS

GMDSS:	
VHF DSC 1	: FURUNO FM-8800S
VHF DSC 2	: FURUNO FM-8800S
MF/HF DSC	: FURUNO FS-1570
INM-C 1	: FURUNO FELCOM-15
NM-C 1	: FURUNO FELCOM 15
GMDSS SURVIVAL RADIO	: McMURDO R2 GMDSS
SART	: McMURDO S4 (2No.s)
EPIRB	: McMURDO SMARTFIND E5
NAVTEX	: FURUNO NX-700B
NAVIGATION:	
GPS	: FURUNO GP-150
AIS	: FURUNO FA-150
GYRO COMPASS 1	: ANSCHUTZ STD22
GYRO COMPASS 2	: SIMRAD GC 80
RADAR 1	: FURUNO FAR-2117
RADAR 2	: FURUNO FAR 2117
ECHO SOUNDER	: FURUNO FE-700
AUTOPILOT	: ANSCHUTZ NP-60
SAFETY & SECURITY:	
SSAS	: FURUNO FELCOM-15
LRIT	: FURUNO FELCOM-15
FIRE ALARM SYSTEM	: TYCO
BNWAS	: KEXUN KBJ 3
SATELLITE COMMUNICATION:	
VSAT	: KNS A9
ENTERTAINMENT:	
TVRO	: INTELLION I6

DP SYSTEM

DP System	: MT Bridge Mate JX with Joystick
Reference System	: 1 x DGPS C-Navigator II; 1 x DGPS R4 Navigator

ZAKHER ALPHA



PRINCIPAL DIMENSIONS

- LENGTH OVERALL 60.50 M
- LENGTH WATERLINE 58.17 M
- LENGTH BETWEEN PERPENDICULARS 53.00 M
- BREADTH MOULDED 14.60 M
- DEPTH MOULDED 5.30 M
- DESIGN DRAUGHT MOULDED 4.75 M
- ACCOMMODATION 42 MEN
- FUEL OIL 520 M³
- FRESH WATER 260 M³
- DRILL WATER 390 M³
- MUD (S.G. - 2.5)/BRINE 130 M³
- BASE OIL 130 M³
- DRY BULK TANKS(4 x 1650 FT³) 2
- CLEAR DECK AREA (DECK LOADING = 7.5 T/M²) 370 M²
- TOTAL POWER 2 x 2575 BHP
- ROLLAND PULL 60 TONNS
- SPEED 13.5 KNOTS

FOR DOCUMENTS AND THE SUPERMARKET IT, CONTACT THE
 CHINA BRANCH OF THE S.P. OIL & GAS CO. LTD. CHINA
 BRANCH OF THE S.P. OIL & GAS CO. LTD. CHINA
 BRANCH OF THE S.P. OIL & GAS CO. LTD. CHINA
 BRANCH OF THE S.P. OIL & GAS CO. LTD. CHINA

DESIGNER	SCALE	DATE
DRAWN	1:125	11/02/03/05
CHECKED	KCM/0633(9)-G1	3
DATE		

KC KHIAN CHUAN
 MARINE PTE. LTD.
 15, HILLVIEW TERRACE, SINGAPORE 689226
 TEL: 67733361 (6 LINES) FAX: 67753388
 E-MAIL: KHIAN@KHIANCHUAN.COM.SG

60.5M ANCHOR HANDLING TUG / SUPPLY VESSEL
 GENERAL ARRANGEMENT