

MV ZAKHER EMPEROR



61M 5150 BHP OFFSHORE SUPPORT VESSEL
(DP1, FIFI 1)

GENERAL

Year of Build / Place	: 2009/ Malaysia
Official No.	: 11473
IMO No.	: 9535888
Flag	: St. Vincent & the Grenadines
Port of Registry	: Kingstown
Call Sign	: J8B5000
Classification	: ABS +A1, Towing Vessel, FiFi Vessel Class 1, Offshore Support Vessel AH, E, + AMS + DPS-1
GRT/NRT	: 1973 / 592

DIMENSIONS

Length O.A.	: 61.25 m
Length W.L.	: 58.70 m
Beam Moulded	: 16.00 m
Depth Moulded	: 6.00 m
Draft Designed	: 4.50 m
Draft Max	: 5.10 m

MACHINERY

Main Engine	: 2 x CAT 3516 B-HD
Horse Power	: Total 5150 BHP@1600 rpm (2x1920kW)
Propellers	: 2 x CPP, 4 bladed
Shaft Alternators	: 2 x 1000 kW @ 1500 rpm
Generators	: 2 x CAT 3412 C, 405 kW diesel driven 415V/3P/50 Hz.
Harbour Generator	: 1 x CAT 3406C, 245 kW, 415V/3P/50Hz
Emergency Generator	: 1 x Cummins 164 kW
Bow Thruster	: 1 No. TCB-90 DSMA, transverse bow thruster, 8 tons thrust
Stern Thruster	: 1 x TCB-70 DSMA, 6 tons thrust

CAPACITIES & DISCHARGE RATES

Clear Deck Area	: 370 m ² @ 7.5 tons / m ²
Fuel Oil	: 546.9 m ³ / 100 m ³ /hr @ 75 m
Potable Water	: 382.6 m ³ / 100 m ³ /hr @ 75 m
Drill Water / Ballast	: 662.5 m ³ / 100 m ³ /hr @ 75 m
Dry Bulk	: 170.0 m ³
Mud	: 245.8 m ³ / 60 m ³ /hr @ 75 m
Foam	: 14.2 m ³
Dispersant	: 14.2 m ³
Freezer / Chiller	: 13.9 m ³

OTHERS

Sewage Treatment Plant	: 60 men capacity, 3600 liter/day
Rescue Boat	: 1 x semi rigid rescue boat, 6 men capacity
Fast Rescue Craft	: 1 x Fassmer FRCA4/FRR 6.5 ID-SF, 15 persons, diesel inboard
Life Rafts	: 6 x 25 persons
H2S Gas Detection	: Fixed system X-40 "DETCON"
Remote Tank Gauging System	: 1 x PMS System
Fresh Watermaker	: 1 x HP SC 440, 10T / day
Loading Computer	: 1 x Loadmaster X5

ACCOMMODATION

Total Accommodation	: 48 men incl. crew
Cabins	: Main Deck - 1x2p, 1x4p Upper Forecastle Deck - 6x1p, 2x2p Lower Forecastle Deck - 5x2p, 2x3p, 4x4p
Hospital	: 1 berth (Sickbay)

DECK MACHINERY

Anchor Windlass	: 1 x electro hydraulic 10 tonnes at 15m/min
Anchor Chain	: 2 x stockless anchors, each 1575 kg. 2 x 330 m x 38 mm Grade 3a steel stud link chain
Capstans	: Plimsoll 2 x 5 tonnes @ 15 m/min
Tugger Winch	: Plimsoll 2 x 10 tonnes @ 15 m/min, wire 200m x 20mm
AH/Towing Winch	: Plimsoll, Electric Winch Hydraulic DD, 150 tons @ 6m/min, 75 tons @ 12m/min, 50 tons @ 18m/min with brake holding power of 225 tons @ 1st layer, tow wire 1000m x 58mm
Stern Roller	: 1.3 to 1.5 m x 3.5 m, 200 tons SWL
Shark Jaws	: 2 x 32 mm to 120 mm dia. chain and wire 300 tonnes
Towing Pins	: 160T SWL
Storage Reel	: 1 x Mcgregor PC-HSW/SD-10A, 10T x 30m/min, wire 1000m x 58mm

DYNAMIC POSITION SYSTEM

ABS - Bridgmate DP1
Reference System - 1 x DGPS
Joystick - Bridgmate JX

EXTERNAL FIRE-FIGHTING

Fire Pump	: 2 x Seawater Pump each 1723 m ³ /hr @ 12 bar
Fire Monitor Water	: 2 x 1200 m ³ /hr @ 120m throw
Fire Monitor Foam	: 1 x 300m ³ /hr @ 70m throw
Emergency Fire Pump	: 1 x 40 m ³ /hr @ 60 m
Spray Booms	: 2 x 6 m

PERFORMANCE

Speed	: 12.5 knots
Type of Fuel Used	: Marine Gas Oil
Bollard Pull	: 63.6 tons

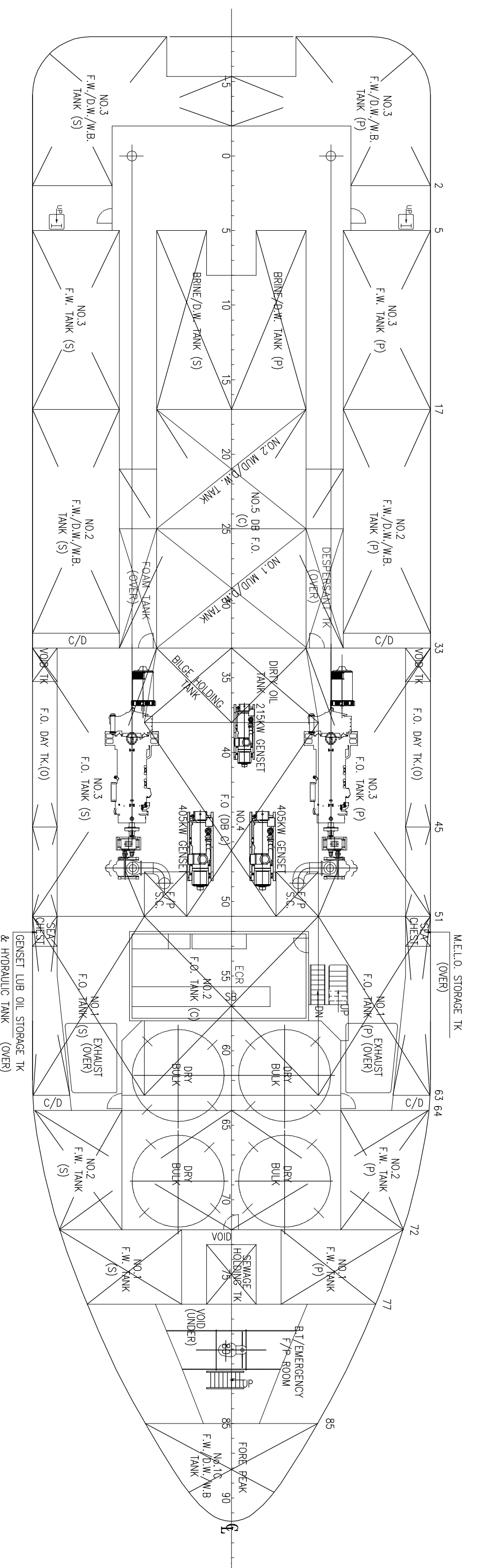
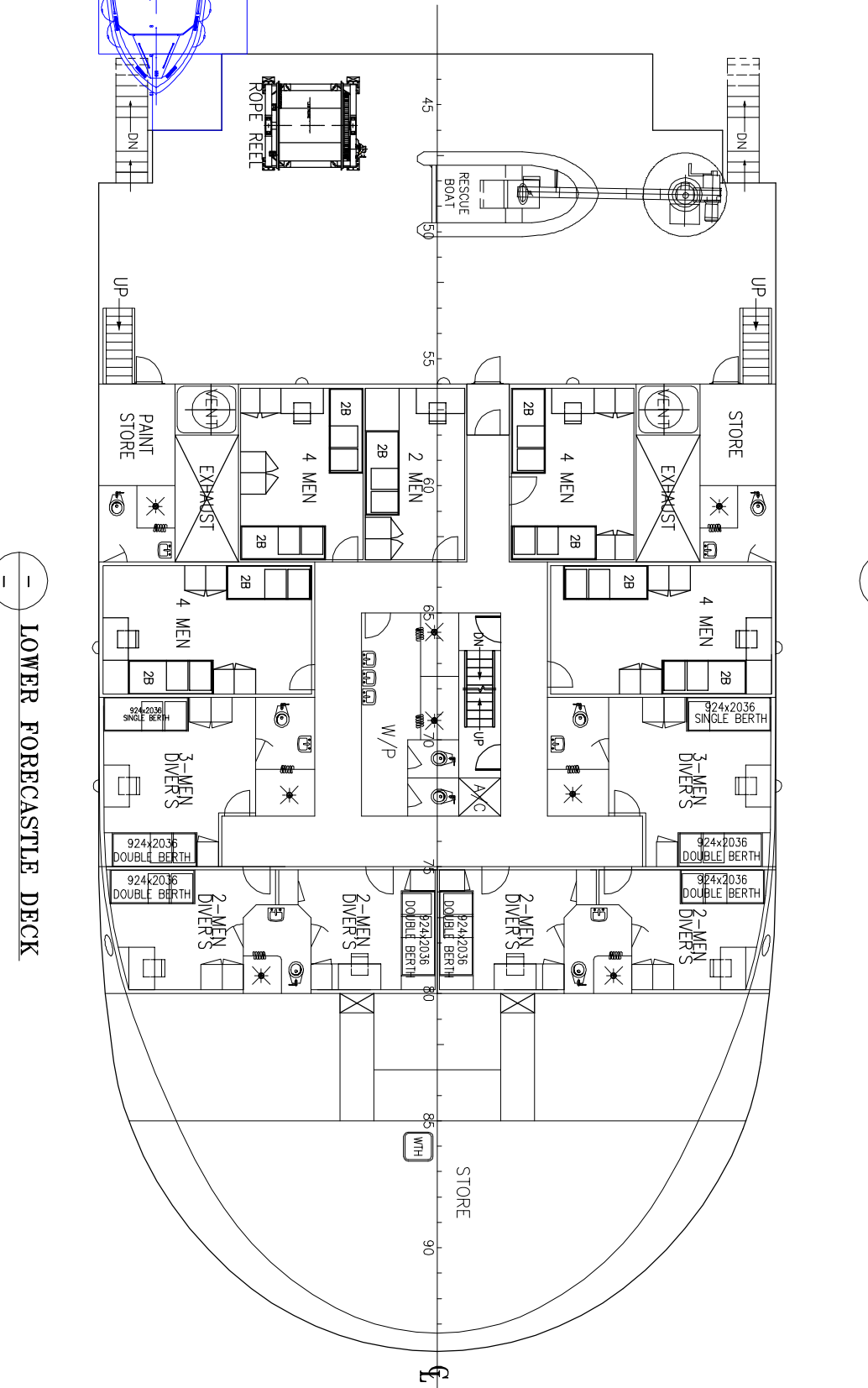
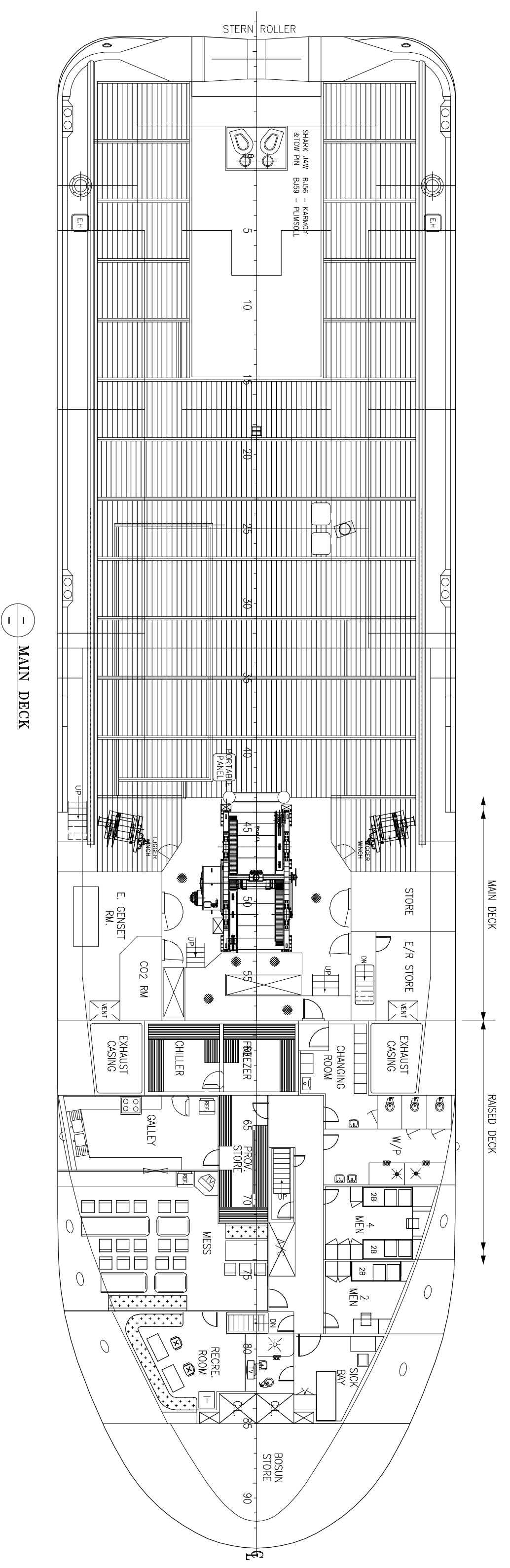
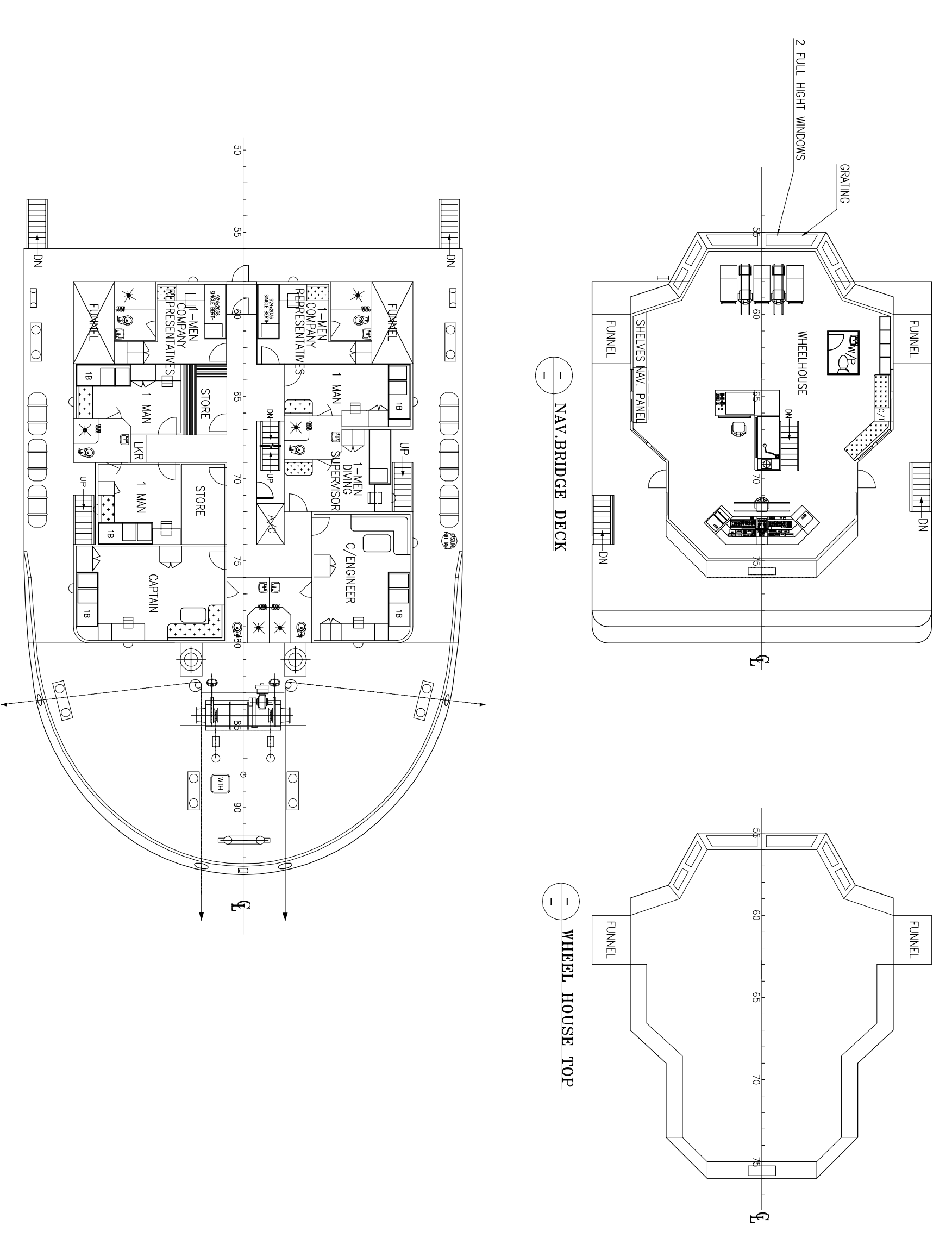
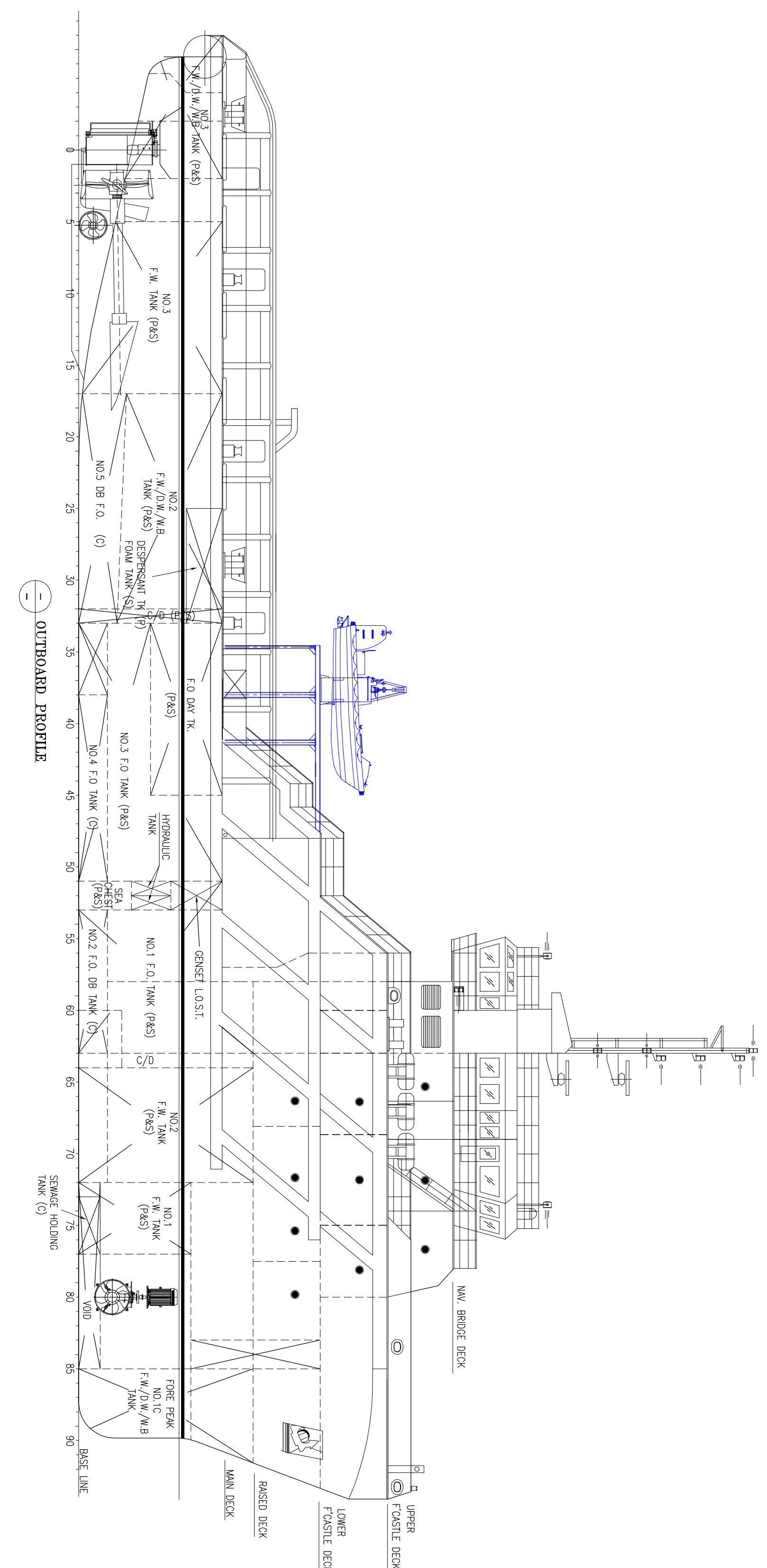
COMMUNICATION & NAVIGATION EQUIPMENT

GMDSS:	
VHF DSC 1	: SAILOR RT-5022
VHF DSC 2	: SAILOR RT-5022
MF/HF DSC	: SAILOR CU-5100
4INM-C	: SAILOR TT-3606E
GMDSS SURVIVAL RADIO	: ICOM IC-GM1600
SART	: SARACOM RT-10 (2 No.s)
EPIRB	: McMURDO SMARTFIND E5
8NAVTEX	: McMURDO NAV7
NAVIGATION:	
GPS	: FURUNO GP-150
AIS	: FURUNO FA-150
GYRO COMPASS	: ANSCHUTZ STD22
RADAR 1	: FURUNO FAR-2117
RADAR 2	: FURUNO FAR 2817
ECHO SOUNDER	: FURUNO FE-700
AUTOPILOT	: ANSCHUTZ NP-60
SAFETY & SECURITY:	
SSAS	: SAILOR TT-3606E
LRIT	: SAILOR TT-3606E
FIRE ALARM SYSTEM	: MINERVA MARINE T-1008
BNWAS	: NAVGARD
SATELLITE COMMUNICATION:	
VSAT	: KNS A9
FBB	: SATLINK FBB250
ENTERTAINMENT:	
TVRO	: KNS

Life Saving Appliances available onboard as per SOLAS, Class and Flag Requirements.

Details believed to be correct but not guaranteed

GENERAL ARRANGEMENT PLAN - ZAKHER EMPEROR



LEGEND
 — : EXISTING STRUCTURE
 — : NEW STRUCTURE

REFERENCE DWG.
 01.DWG NO. - C-4291(C)/S-1 - GENERAL ARRANGEMENT
 02.DWG136_PROP-NEW DAWT PLATFORM

PRINCIPAL PARTICULARS
 LENGTH (O.A.) : 61.25 m
 LENGTH W.L. : 58.70 m
 BREADTH (MID.) : 16.00 m
 DEPTH (MID.) : 6.00 m
 DESIGNED DRAUGHT : 4.50m/5.10m
 COMPLEMENT : 46 MEN

NO	REV	DATE	DESCRIPTION	REVISED BY	APPROVED
102201	0	25.12.13	INITIAL ISSUE		GM

ZAKHER EMPEROR

ARIES MARINE & ENGG. SERVICES
 20th FLOOR, MINA ROAD, SHARJAH, U.A.E
 Tel: +971(0)6 5503300, Fax: +971(0)6 5503100
 Website: www.ariesgroup.ae, Email: design@ariesgroup.ae

GENERAL ARRANGEMENT PLAN

VESSEL NAME : ZAKHER EMPEROR DATE : 25.12.13 DWG. No : DN9136/2001
 DRAWN BY : KES JOB No : DN9136 SHEET : 01 OF 01
 CHECKED BY : DB SCALE : 1:150 REV : 0 SIZE : A1

This drawing, design concept, and specifications are the property of ARIES MARINE & ENGG. SERVICES and are included on a confidential basis with an expressed understanding that they will not be copied in any manner, used for reproduction, sold, or otherwise disclosed to any third party without the written consent of ARIES MARINE & ENGG. SERVICES. These contents herein are for your reference only and are not to be used for any other purpose except for those specific purposes for which this drawing was issued.